



TOGETHER We Do More...

From Egypt to Europe...

Through This Joint-Venture

TIME OF EXPLORING EGYPT'S METAL INDUSTRY

THE RIGHT MACHINING PARTNERS

THE UNIQUE LOCATION & LOGISTIC FACILITIES

LOWER MACHINING COST (LABOR, LAND & FUEL)

HIGH INTENTION FOR EXPORTING



GOODWAY TECH...

The Key Partner to Egyptian Metal Industrial Sector

Goodway First started operation 21 years ago, Supplying the Egyptian, African and Middle-Eastern Market, Delivering high-quality equipment and top-grade materials, providing integrated design, industrial processing, engineering consultancy and after sales servicing.



GOODWAY TECH...

The Key Partner to Egyptian Metal Industrial Sector



Under This Brand



GOODWAY

- **1500+ CNC MACHINES RUNNING SUCCESSFULLY UNDER GOODWAY's ENGINEERS SUPERVISION**
- **TRUSTFUL & LONG TERM RELATIONS WITH 1000+ Customers**
- **INDUSTRIAL & MACHINING APPLICATION BACKGROUND & SKILLS**
- **NEW MANUFACTURING FACILITY TO FULFILL INDUSTRIAL NEEDS**

A Wide Existence in Many Industrial Fields

- Goodway has been the forefront Industrial partner since 2002, with an international network of a loyal client base.
- Our Innovative and productive machines, can be found all along in Egypt, Middle-East and Africa, Serving numerous industries.
- Our machines all over Egypt, have enabled us to take on the most complex projects.



Wide Range of Machines Under Our Control



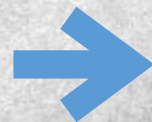
Our New Manufacturing Facility

Our CNC machining factory is well-equipped with full serviced machines such as Milling machines, Turning Machines and Drilling machines. The geometrical and dimensional tolerances can be fully reached by these advanced equipment.

We utilize automatic inspection machines, 2D and 3D laser scanners to check dimension and surface.

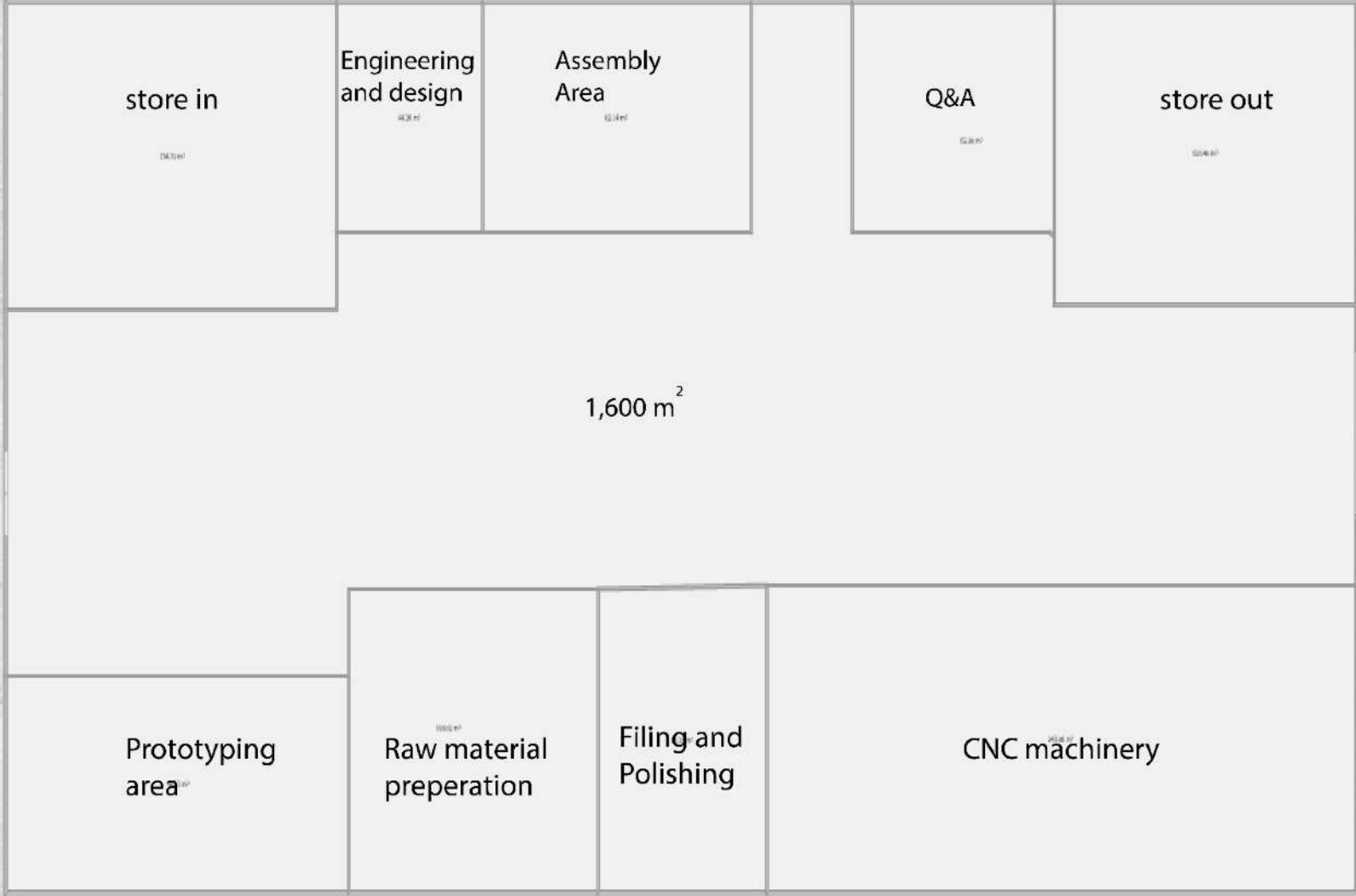
We Work with a wide range of materials including steel, cast iron, aluminum, stainless steel, copper, bronze, brass and aircraft alloys.

Our Newly Installed 3rd
Machining Center



Our New Manufacturing Facility

**Increasable
1600 sqm**



Machining Factory

#	Machines	Size range	Qty	Accuracy
1	(VMC-1)	650x400 mm	1	± 0.005
2	(VMC-2)	700x450 mm	1	± 0.005
3	(VMC-3)	800x500 mm	1	± 0.005
4	CNC Turning Center	450x600mm	1	± 0.005
5	CNC Laser machine	300x300 mm	1	±0.002
6	CNC Engraving Machine	600x600x200	1	± 0.005
7	3D Laser Scanner		1	
8	EDM Drilling machine	300x400mm	1	
9	Band Saw		1	
10	Welding Equipment			
11	3D Printer		2	

We Specialize in the design and production of high precision machining turning parts.

Goodway - Wemech

Project Teamwork



Project Co-ordinator
Mostafa Morsy

Email: m.morsy@goodwaycorp.com
Phone: +20 (100) 163 6455



Commercial & Contracting
Medhat ElShukeiri

Email: Medhat@goodwaycorp.com
Phone: +20 (100) 163 6457



Technical Advisor
Yasser Saber

Email: Y.emam@goodwaycorp.com
Phone: +20 (100) 155 6589



Export Manager
Passerini Roberto

Email: r.passerini@wemech.com
Phone +39 331 8877655



Project Manager
Mohamed Elbehiry

Email: M.elbehiry@goodwaycorp.com
Phone: +20(109) 011 1267



Marketing & Research
Nourhan Mostafa

Email: n.mostafa@goodwaycorp.com
Phone: +20 (120) 058 0043

Based on Above...

- We can work on a variety of metal machining projects.
- We provide one stop solution. We are responsible for the whole process, from design, trial production, material testing, mass manufacturing, quality control to logistics and after service.
- With the help of our supply chain network, we find the right product & supplier as well as the right partners in areas of metal fabrication, heat treatment and surface treatment.
- We provide high quality products with the competitive pricing strategy & we can achieve the European quality standard.





THANK YOU...